



Parcela Smart Electronic Lockers

Designed to Simplify Your
Package Management



We make it better

An aerial photograph of a large port facility at sunset. The sky is filled with vibrant orange and yellow clouds, with the sun low on the horizon. In the foreground, a large white cargo ship is docked at a pier, with several yellow gantry cranes extending over it. The water is calm, reflecting the warm light. In the background, a dense city skyline with numerous skyscrapers is visible across the water. The overall scene conveys a sense of industrial activity and global connectivity.

The next phase in supply chain evolution

2020 brought some dramatic changes in supply chain management. Consumers turned even more sharply to eCommerce than they had in previous years, and JIT (Just-in-Time) logistics proved unable to meet the demand shocks created by a global pandemic.

The fulfillment industry is already moving toward solutions to address the modern strains placed on supply chains. And ParcelA Lockers will be part of the next logical step in the evolution of last mile logistics. Like previous changes to supply chain management, ParcelA Lockers use the latest technologies to solve today's most pressing problems.

PARCELA® - A World Leader in Last-Mile Order Fulfillment Strategies

ParcelA is a global provider of leading, user-agnostic smart parcel locker solutions. As a complete, End-to-End (E2E) parcel management solution, ParcelA helps optimize the density of the locker network for your needs, uses software that integrates with your data management system to control the day-to-day activities of the network, and uses the highest quality materials in the design of the lockers themselves. Our lockers bridge the gap between the security your customers need, and the conveniences they want.

ParcelA Lockers are part of a more resilient, flexible, and robust supply chain.

- 40% savings on the cost of the last-mile of delivery.
- One destination to speed up the delivery time of each order, and decrease the amount of time on the road between orders.
- Available 24/7 to eliminate the chance of missing a delivery window.
- Higher drop density and lower number of missed deliveries for carrier services.
- Better end-user experience as a bridge between the security consumers need, and the conveniences they want.





ParcelA Lockers for Your eCommerce Store

Is your eRetail company aiming to meet your customers where they are at? Decrease your eCommerce store's dependence on third-party logistics companies, and stay competitive in an omnichannel market, with ParcelA's smart lockers. Partnering with ParcelA – a leading manufacturer of smart parcel lockers – gives eRetailers of every size access to an all-in-one supply chain management solution.

The Benefits ParcelA Provides for eRetailers:

- Lower costs of delivering to your core market
- Return process is simplified
- Logistics, forecasting, and planning to ensure strategic installations
- Higher customer acquisition, conversion, retention, and satisfaction rates

ParcelA Lockers for Third Party Logistics Companies

Is your logistic company aiming to solve the problems of the last mile?

User-agnostic ParcelA lockers lower 3PL costs over the last mile, as well as your carbon footprint, while increasing your profit and client satisfaction.

Partnering with ParcelA – a leading manufacturer of smart parcel lockers – gives logistics companies of every size ability to solve today's most pressing logistic problems.

The Benefits ParcelA Provides for Logistic Companies:

- Higher drop densities and lower costs
- Increased security for packages
- Data management system to ensure utilization rates, and increase ROI
- Modular and scalable solution to the problems of last-mile logistics





ParcelA Lockers for Multi-Family Residences, Offices and Schools

Are you offering the amenity of package management for better tenant satisfaction? Package management is one of the most requested amenities in multi-family residences, buildings that are home to multiple businesses, schools and universities.

Kiosks of ParcelA lockers can be installed in convenient locations in multi-family residences, office facilities and universities, giving them instant access to their parcels 24 hours a day, 7 days a week.

User-agnostic lockers like ParcelA allow couriers from any business – including major carrier services, local stores and pharmacies, and even dry cleaners and other services – to deliver goods directly to the parcel locker. There, items will be kept safe and secure until retrieved by the owner.



PARCELA®



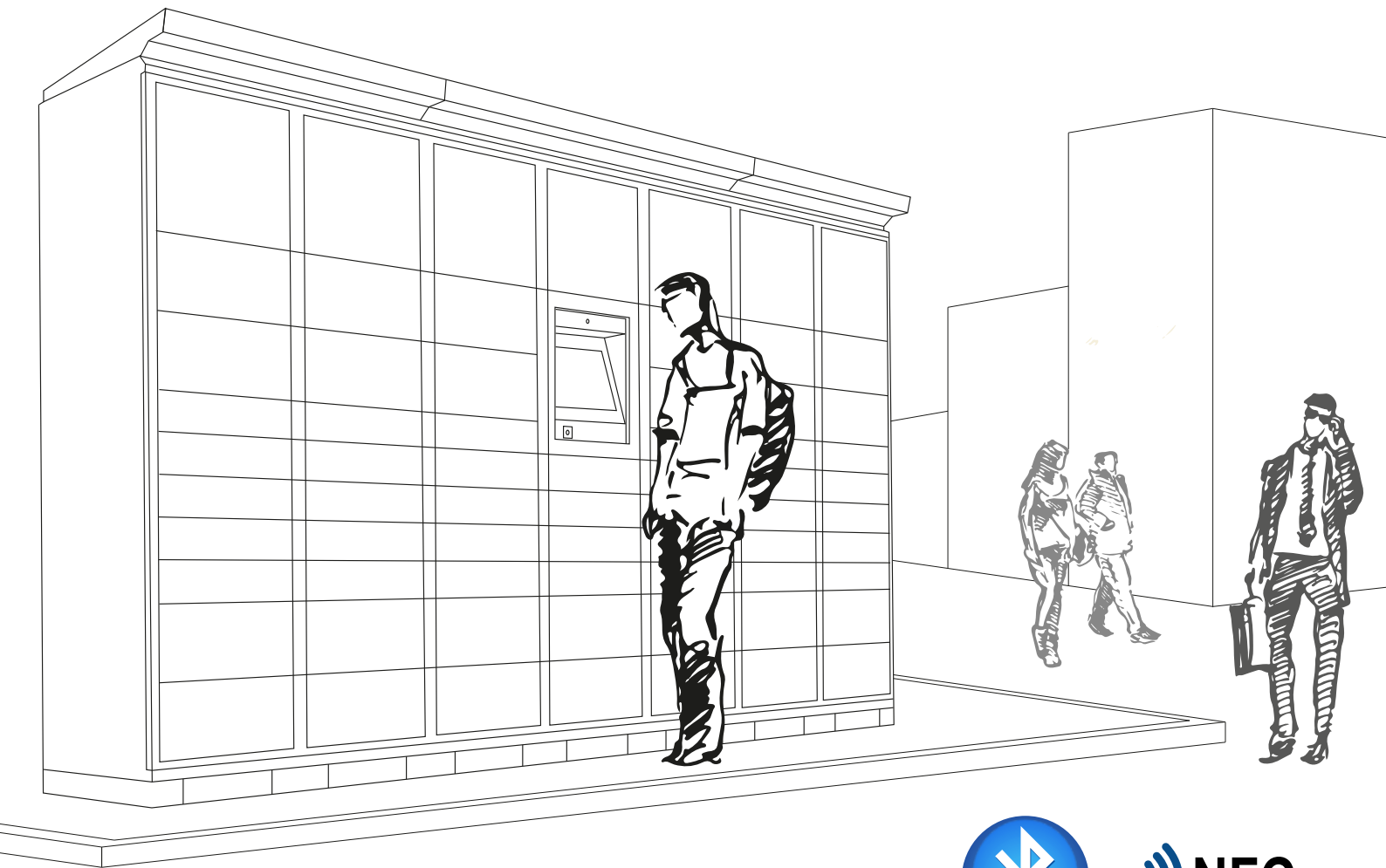


ParcelA EraTM

ParcelA Era lockers are modular, scalable, and customizable to your unique space. Box columns can be fitted with different sized lockers to manage different sized parcels, and an unlimited number of columns can be combined to meet consumer demand.

ParcelA Era, which can save electricity for a more sustainable world, has a sleep mode option. ParcelA Era, which can stay in sleep mode until your customers arrive, work at automated hours.

Our lockers are designed of high-quality steel that protects packages from the elements and lockers from being tampered with. By providing a dense network for securely delivering parcels, we help control operational expenses for companies while also eliminating the loss of packages through porch piracy for consumers.



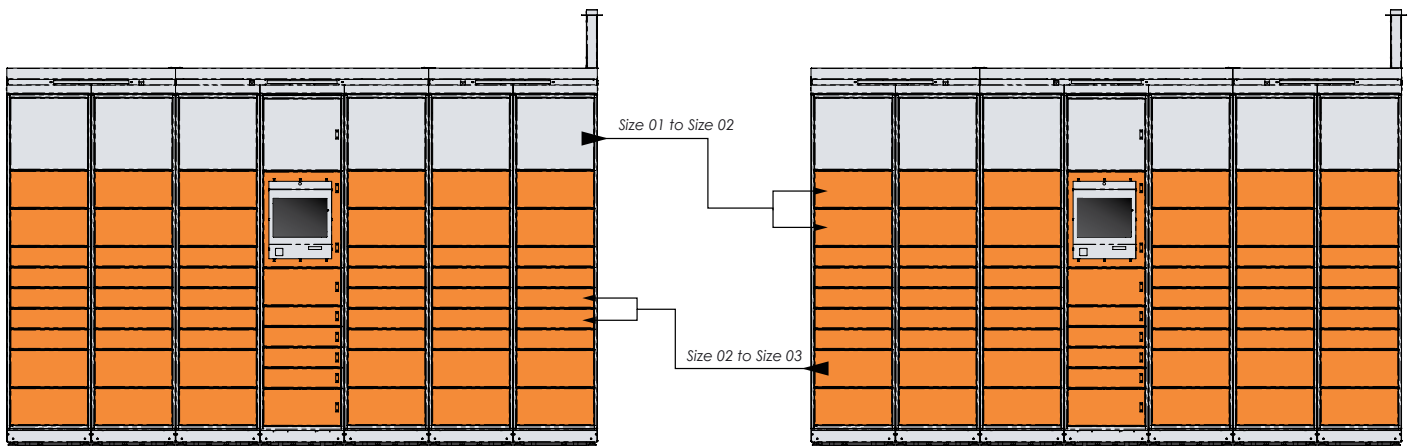
Bluetooth and NFC features are optional and can be added based on business needs

Product Description

- Balance adjustment and seismic mounting options,
- Modular design allows installation to meet CapEx and scale with growth,
- A modular, scalable design that meets any need,
- The number of locker columns can be adjusted according to need, as can the dimensions of the boxes within each column, based on usage data

For example: A parcel locker is installed with 10 size-01 boxes, 7 size-02 boxes, and 1 size-04 box. However, there isn't any demand for size-02 or size-04 boxes, but all of the size-01 boxes are frequently used.

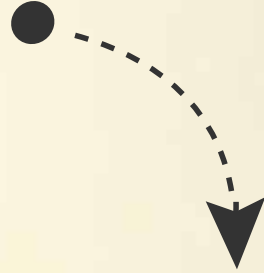
- Easy Solution: In this situation, the unused size-02 and size-04 boxes can, with an administrator's key, simply be removed from the locker frame and replaced with more size-01 boxes. The size-02 and 04 boxes can be re-used in a different location.



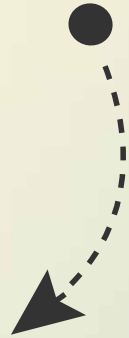
- Electromechanical infrastructure designed for flexibility,
- The process of adjusting locker sizes is made simple through our unique, modular design. This allows the use of different sections as easily as swapping out drawers, with no dismantling the units or modifying electronics.
- Vandal-proof SAW touchscreens,
- **We use industrial outdoor monitors (IP65) in all of our electronic lockers.**
- Standard 15'' Screen,
- Excellent visibility even in bright sunlight (450nits),
- Waterproof,
- Sleep mode,
- Resistant to external environmental conditions,
- Our TFT LCD panel creates a capacitive touch screen with improved image quality,
- Durable steel construction is both corrosion and tamper resistant.
- 24/7 terminal surveillance and camera recording,
- Surveillance and monitoring integrates seamlessly with data management software, giving locker administrators 24/7 security over their investment. Activity at the lockers can be tracked in real time, and is also stored for later use.



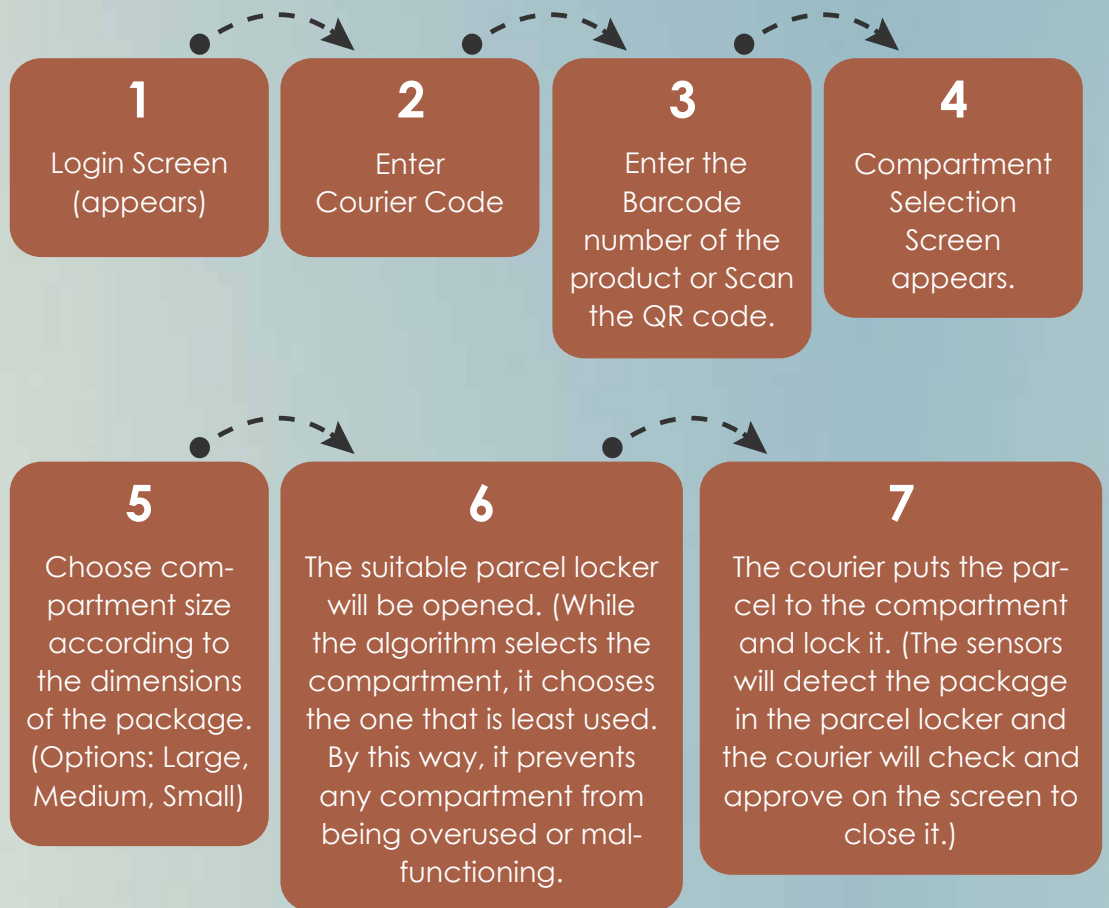
1 Save



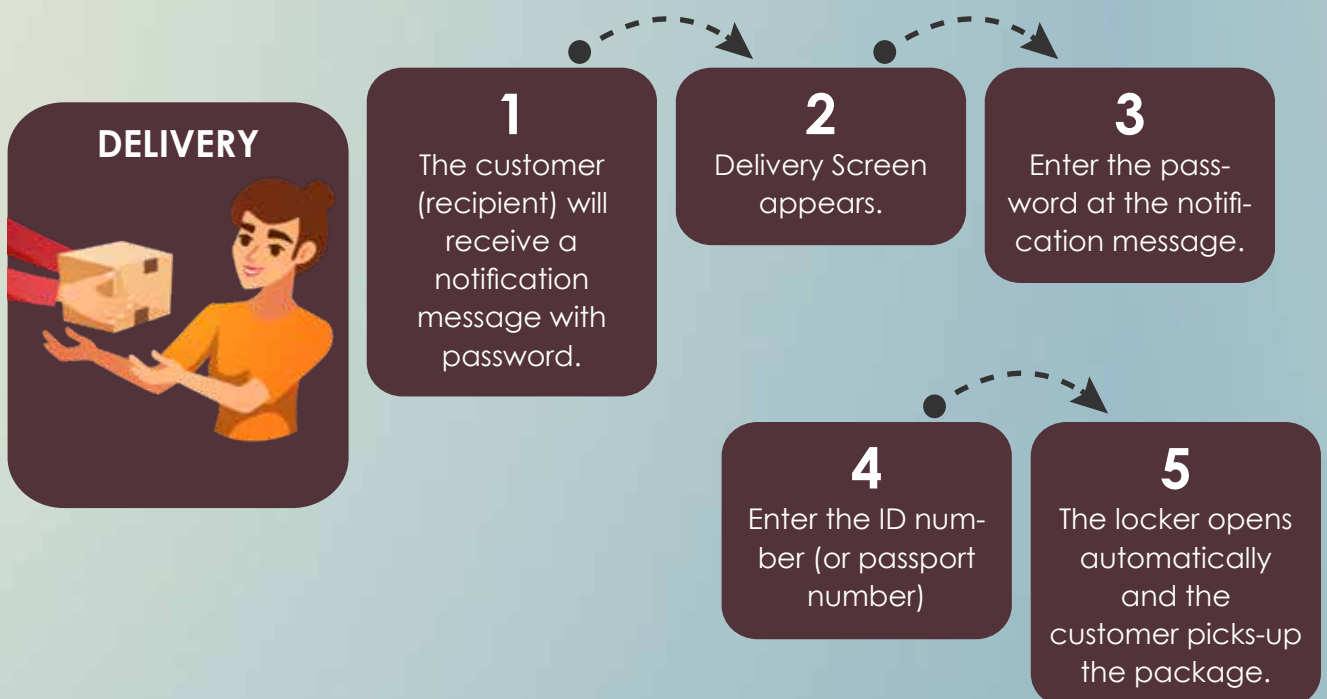
2 Delivery Info Notification



3 Delivery



After the courier delivers the package to the parcel locker, the system sends an SMS message to the customer (recipient) with location of parcel locker, delivery tracking number and password as notification.





Work Station PC

- Designed to provide 24/7 service
- Next-generation micro processors
- Windows and Linux options



Uninterruptible Power Supply (UPS)

- With options up to 20kW
- Wide range of input voltages while input PF>99%
- Output Power Factor (PF) of 0.9
- Full suite of protections, including over-voltage, short circuit and over-heating
- LCD/LED display and continual status monitoring
- 19" standard cabinet and battery cabinet
- Automatic fan speed adjustment
- Interface options include RS232, USB, SNMP, and Smart Card



Power Monitoring Systems

- Automatic reporting of energy consumption
- Automatic notification in case of power failure
- Temperature and humidity alarms
- Logs and reports events
- Web-based architecture allows remote control



Product Features

- Micro-control unit and mainboard technology, enables the control, management, and tracking of all the system's electronic parts and sensors, as well as communication between them
- Rugged, tamper-proof locking technology
- Security sensors that detect if a locker box is occupied, and don't allow an occupied box to be locked without end-user approval
- Motion and thermal sensors to detect movement and life signs, and that don't allow boxes to lock with children or pets inside
- Temperature and humidity sensors for remote, real-time monitoring
- Energy sensor tracks power usage in real time
- Optional vibration sensor for increased security against vandalism
- Barcode reader to facilitate the drop-off and return processes
- Micro-service software architecture that fully integrates with warehousing data management software to facilitate delivery routing and customer service needs

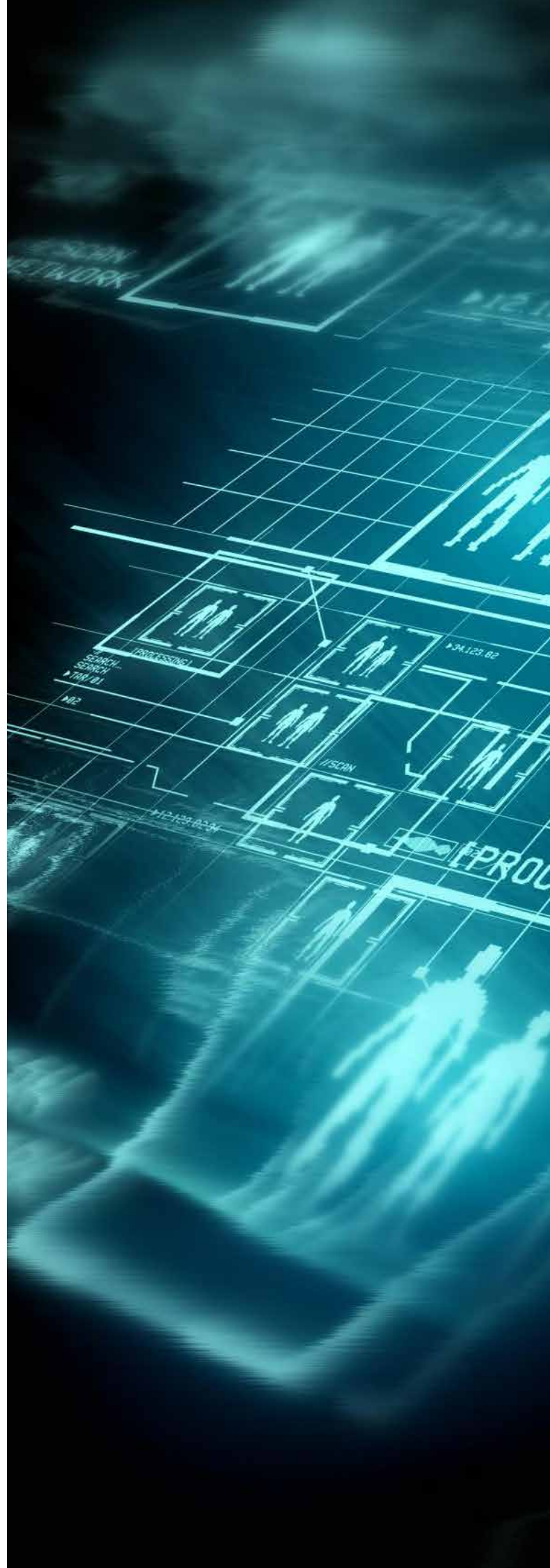
- Easy installation and maintenance
- Operational even if offline
- User-friendly interface that enables quick access to features and functions
- Web-based portal application for remote tracking and systems and maintenance checks
- Optional mobile application allows users access from the comfort of a familiar device
- QR-code reader to facilitate drop-offs and returns
- Software updates as needed, automatically, 24/7
- Data management system integrations can be done on-site or through the Cloud
- High availability solutions that unify systems and increase customer satisfaction
- Data reporting and backlog management to track data and security, and plan for growth

Advanced Features

- 1- Geographic Information System (**GIS**)-based location and status tracking
 - Tracks and helps control parcel lockers
 - Sends alerts in case of malfunction or tampering
- 2- AI-enabled work process optimization and reporting
 - Tracks where and when parcel deliveries and pick-ups occur
 - Tracks and analyzes performance metrics, including the time between order placement, delivery, and pick up

Security

- All data is log encrypted
- Data security managed with SSL certificates
- Data transferred through the system is secured through SSL, and can be provided via private network, VPN or APN
- All malfunctions and system errors can be tracked through the Web-based portal application
- Malfunction and system errors are communicated to the logistics provider, who owns the data
- Alert tracking system provides all the critical system and software data
- Real-time data and software backup
- All data is encrypted to protect personal data, and meets the strictest international data protection regulations including the GDPR and PCI data security standards



Software ParcelA Era

ParcelA Era Lockers' User-Friendly Access

- Compatible with iOS and Android devices
- Wi-Fi or cable internet enabled
- Continues to operate even if internet connectivity fails
- Carriers can quickly access the lockers through touch screen display with PIN
- Recipient is notified at time of drop off through text or email
- To retrieve a package, addressee simply visits the locker and unlocks their box with an SMS code received on their phone

Open API Fully Integrates Software

ParcelA Era systems incorporate a Cloud- and microservice-based software architecture to fully and easily integrate with data management systems such as Warehouse Management Systems (WMSs) and Enterprise Resource Planning (ERP) software. Our open Application Programming Interface (API) gives users instant access to all features of our lockers, while also allowing for the control and tracking of the systems' electronic sensors and parts.

Our software enables users to:

- Control lockers remotely in case of problems
- Manage data and track package chain-of-custody and locker usage
- Integrate with other data management systems to streamline business functions
- Notify users and administrators of package pickups and deliveries
- Alert administrators of potential concerns, including tampering and safety

ParcelA Era Fully Integrable Software

- Our microservice-based software architecture has been engineered by ParcelA's developers to serve as a one-stop portal for both B2B (Business to Business) and B2C (Business to Customer) environments. Our Cloud-based system makes our features instantly accessible.
- Learn how you can integrate our last-mile – and last-100' feet – solutions into your supply chain management.

Modularity, Scalability, and Security

Our package management solution is fully modular and scalable. Different sized locker boxes can be installed in columns, and as many columns as needed placed on location. Our software tracks usage, which allows your system to grow with your customer base. Packages are kept securely until picked up, and users are kept safe through use of our integrable cameras and when locker columns are placed in convenient, high-traffic areas.

Data Security

ParcelA's entire system was designed to meet the strictest international data protection laws. Data is fully encrypted and backed up, while also kept up-to-date and recoverable. Our security protocols minimize the processing of financial and personal information, and limit access to user data to times that it is needed.

The image shows a row of ParcelA lockers. The word "PARCELA" is printed in large, bold, black letters across the top of the lockers. The lockers have orange and white panels. The background is a blurred image of a locker facility with a checkered floor.

PARCELA®

Virtual Private Cloud

ParcelA Era's Software tracks and logs access to controls, analytics, and data, and allows you to view them in your own private network to ensure security is maintained.

User Agnostic Package Management Solution

ParcelA Era lockers are user-agnostic, which means that owners and admins can determine who can access lockers and boxes. This allows ParcelA lockers to be used as a package management system for the general public, for a small group of people, or for individuals.

Reporting and Analytics

ParcelA Era's Cloud-based architecture enables real-time logistics reporting, with near-instant access to updates, records, and logs. Track locker usage over time including time-in-locker, time-to-delivery, and under-used lockers. Planning for growth is made possible through our robust analytics and 24/7 customer support.

Real-Time Dashboards

Track in real time the Key Performance Indicators (KPIs) essential for your business to help streamline your operations.



Robust Reporting and Data Exporting


Key Performance Indicators (KPIs) can be tracked and managed through our Service-Level Agreement (SLA) management tool. Data can be captured in bulk and exported to the Business Intelligence (BI) tool of your choice.

Fully Encrypted Data Base

ParcelA Era meets the strictest international standards for data security and encryption, and partners only with Cloud computing services that also meet those rigorous standards.

Data Recovery in Case of Disaster

To prevent data loss in the case of a power or systems failure, all data is regularly backed up to our Cloud computing service. Our 24/7 customer support can get you back up and running as quickly as possible, with no loss of data or business.

A hand is shown pointing towards a futuristic, glowing blue interface. The interface features several circular icons: a bar chart, a gear, a person with a checkmark, and a group of people. A large, glowing blue silhouette of a human head is also visible, containing a gear icon. The background is dark with a blue glow.

User-Friendly Notifications through Text, Email, or Push Notification

- Opening, closing, and locking doors, as well as deliveries and pickups, all trigger events. For each event, users and admins can be notified through their choice of text, email, or push notification.

Real-Time Diagnostics

- ParcelA Era lockers have a suite of diagnostic sensors that continually update the system. This enables our 24/7 customer service department to help you troubleshoot issues, and provide technical assistance as needed.



PARCELA[®]

A vertical image on the left side of the page shows a ParcelA Edge Touchless locker unit. It consists of two columns of lockers. The top half of each column has a light blue upper section and an orange lower section. The lockers are separated by white vertical dividers. The unit is mounted on a wall, and the floor in front of it has a black and white checkered pattern.

ParcelA EdgeTM

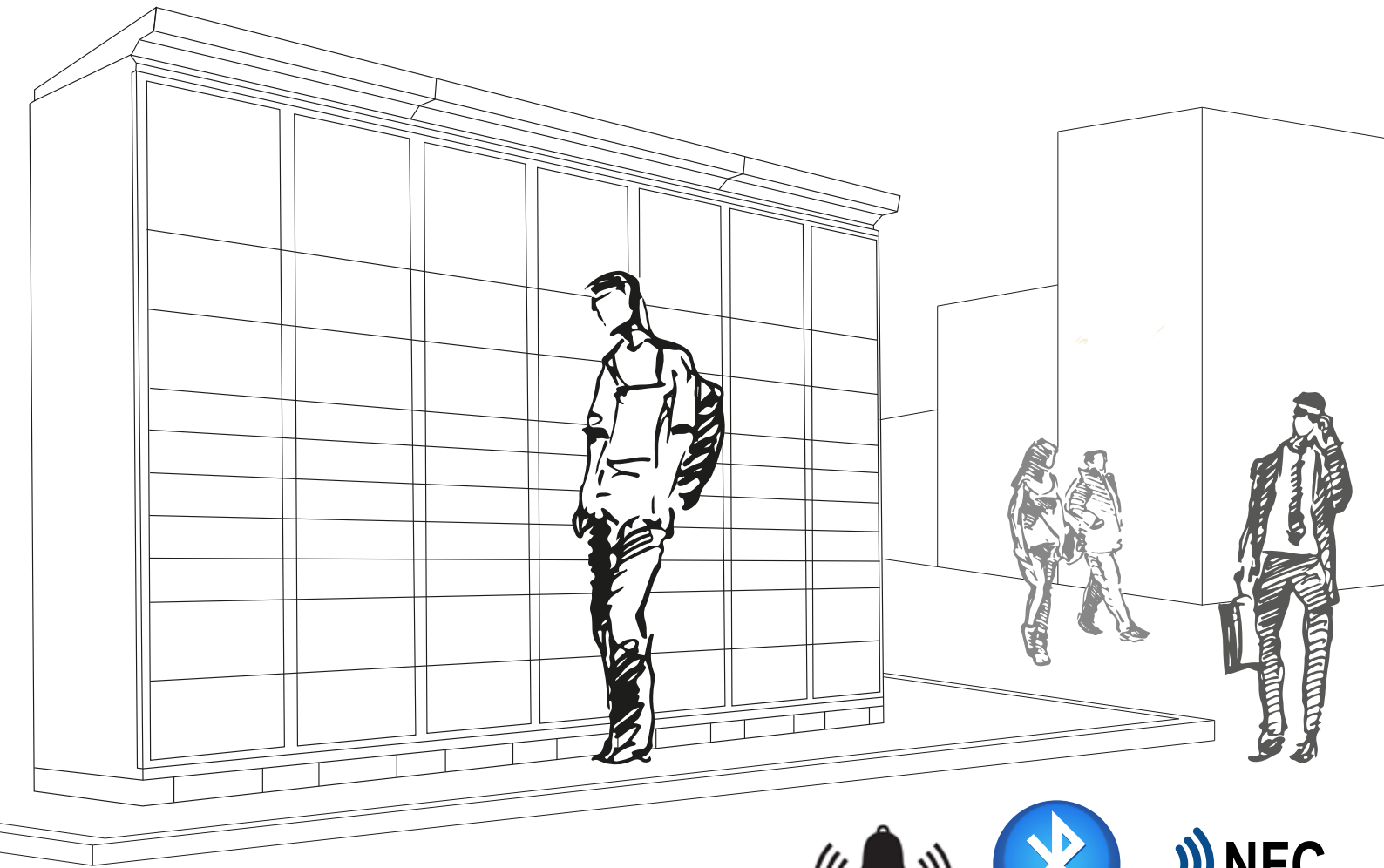
Touchless

ParcelA Edge (Touchless) lockers are modular, scalable, and customizable to your unique space. Box columns can be fitted with different sized lockers to manage different sized parcels, and an unlimited number of columns can be combined to meet consumer demand. This, in combination with our always-on design that **is independent of external power sources, allows ParcelA Edge's lockers to be installed where it makes the most sense for your needs.**

- No power supply needed
- No data/internet service needed
- No screen needed
- Bluetooth wireless technology included
- NFC (Near-Field Communication) technology included
- PIN Pad can be added
- 4G communication can be added,
- A standalone automated parcel locker solution

Our software is compatible with the users' mobile devices including both iOS and Android architectures.

Our lockers are designed of high-quality steel that protects packages from the elements and lockers from being tampered with. By providing a dense network for securely delivering parcels, we help control operational expenses for companies while also eliminating the loss of packages through porch piracy for consumers.



Product Description

- Balance adjustment and seismic mounting options
- Modular design allows installation to meet CapEx and scale with growth
- A modular, scalable design that meets any need;
- The number of locker columns can be adjusted according to need, as can the dimensions of the boxes within each column, based on usage data.

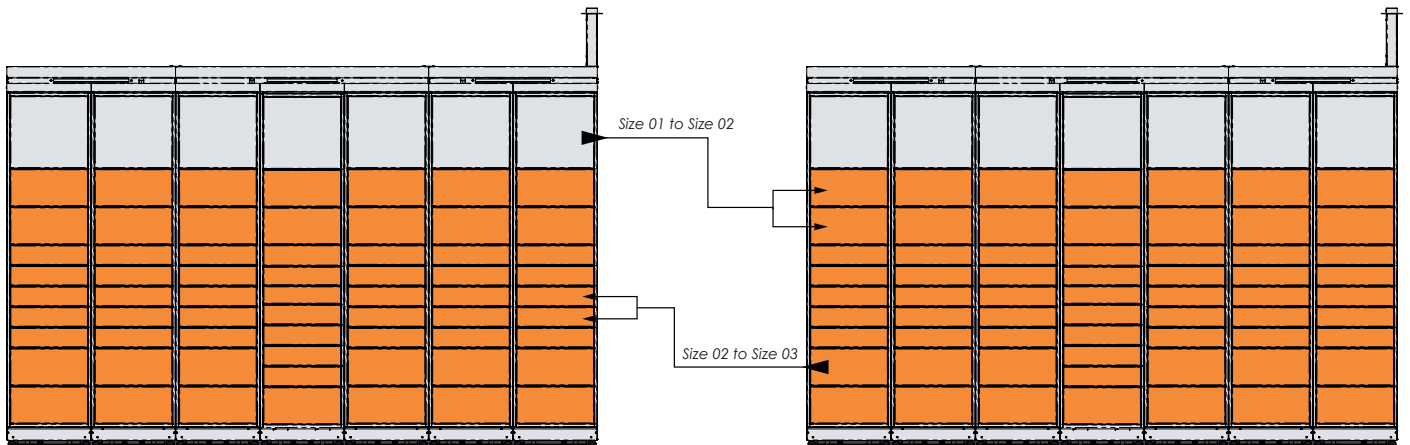
For example: A parcel locker is installed with 10 size-01 boxes, 7 size-02 boxes, and 1 size-04 box. However, there isn't any demand for size-02 or size-04 boxes, but all of the size-01 boxes are frequently used.

- Easy Solution: In this situation, the unused size-02 and size-04 boxes can, with an administrator's key, simply be removed from the locker frame and replaced with more size-01 boxes. The size-02 and 04 boxes can be re-used in a different location.

Bluetooth and NFC
features included

PIN Pad is optional





- Electromechanical infrastructure designed for flexibility,
- The process of adjusting locker sizes is made simple through our unique, modular design. This allows the use of different sections as easily as swapping out drawers, with no dismantling the units or modifying electronics,
- Waterproof,
- User convenience according to the optional code uses,
- Resistant to external environmental conditions,
- Durable steel construction is both corrosion and tamper resistant,
- 24/7 terminal surveillance and camera recording,
- Surveillance and monitoring integrates seamlessly with data management software, giving locker administrators 24/7 security over their investment. Activity at the lockers can be tracked in real time, and is also stored for later use.

SAVE



1

The courier logs into the app.

2

Connect to the parcel locker by selecting the Courier Code created by the system from the application

3

Compartment Selection Screen appears at the application.

4

Choose compartment size according to the dimensions of the package.
(Options: Large, Medium, Small)

5

Press "Unlock" button from the application to open the compartment determined by the system.

6

The courier puts the parcel to the compartment and lock it



After the courier delivers the package to the parcel locker, the system sends notification to the customer (recipient) with location of parcel locker and delivery information.



1

The customer (recipient) will receive a notification message from the application and SMS at his/her mobile phone.

2.2

Enter your SMS code to pinpad.

OR

2.1

Log into the application by entering the code sent to the mobile phone via SMS.

3

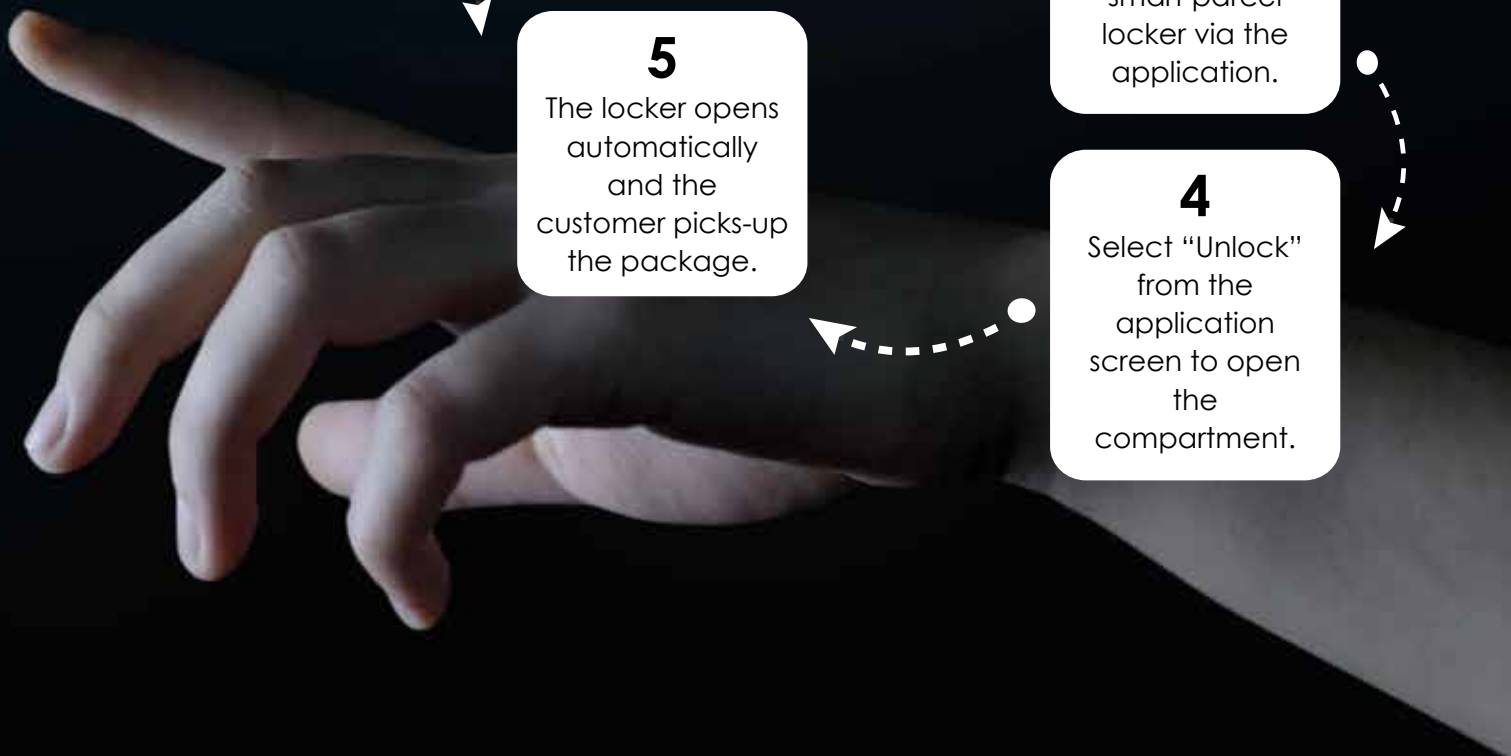
Connect to the smart parcel locker via the application.

4

Select "Unlock" from the application screen to open the compartment.

5

The locker opens automatically and the customer picks-up the package.





Work Station PC

- Designed to provide 24/7 service
- Next-generation micro processors
- Windows and Linux options



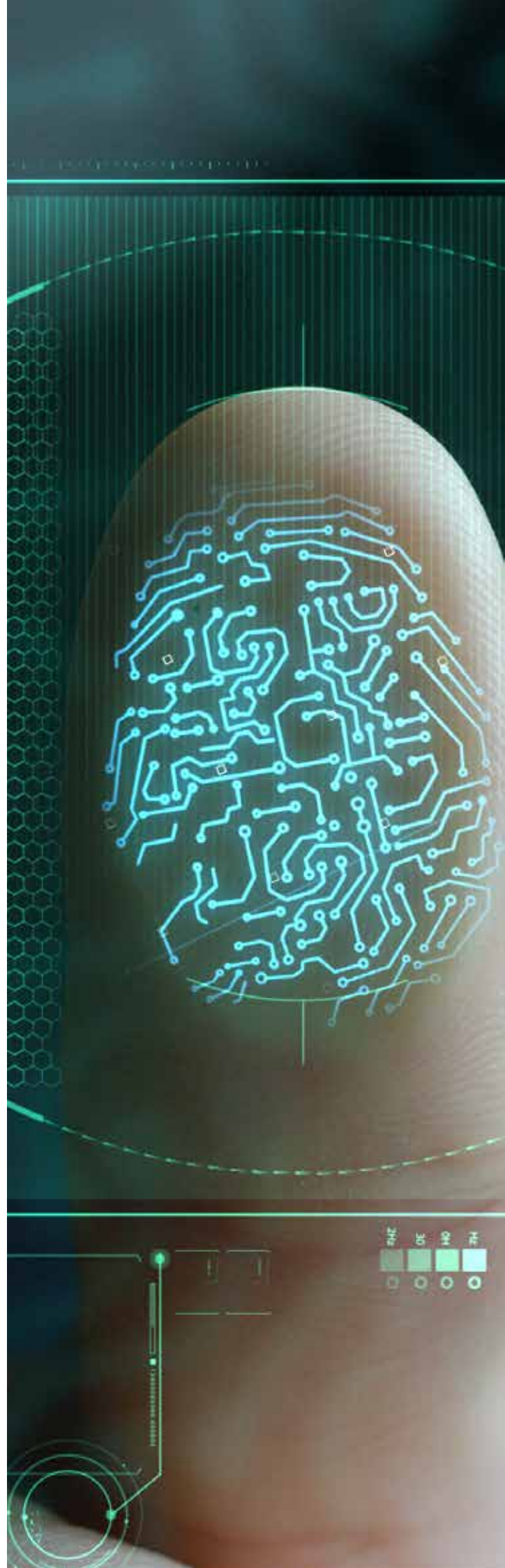
Uninterruptible Power Supply (UPS)

- With options up to 20kW
- Wide range of input voltages while input PF>99%
- Output Power Factor (PF) of 0.9
- Full suite of protections, including over-voltage, short circuit and over-heating
- LCD/LED display and continual status monitoring
- 19" standard cabinet and battery cabinet
- Automatic fan speed adjustment
- Interface options include RS232, USB, SNMP, and Smart Card



Power Monitoring Systems

- Automatic reporting of energy consumption
- Automatic notification in case of power failure
- Temperature and humidity alarms
- Logs and reports events
- Web-based architecture allows remote control





Other Features

- **Bluetooth and NFC technologies**
- **No need for data cables**
- Delivery and pickup interface options through smart phones, tablets, and smart watches
- Operational even if offline
- Easy installation and maintenance
- User-friendly interface that enables quick access to features and functions
- Web-based portal application for remote tracking and systems and maintenance checks
- Optional mobile application allows users access from the comfort of a familiar device
- QR-code reader to facilitate drop-offs and returns
- Software updated as needed, automatically, 24/7
- Data management system integrations can be done on-site or through the Cloud
- High availability solutions that unify systems and increase customer satisfaction
- Data reporting and backlog management to track data and security, and plan for growth



Advanced Features

- Geographic Information System (GIS)-based location and status tracking
 - Tracks and helps control parcel lockers
 - Sends alerts in case of malfunction or tampering
- AI-enabled work process optimization and reporting
 - Tracks where and when parcel deliveries and pick-ups occur
 - Tracks and analyzes performance metrics, including the time between order placement, delivery, and pick up

Security

- All data is log encrypted
- Data security managed with SSL certificates
- Data transferred through the system is secured through SSL, and can be provided via private network, VPN or APN
- All malfunctions and system errors can be tracked through the Web-based portal application
- Malfunction and system errors are communicated to the logistics provider, who owns the data
- Alert tracking system provides all the critical system and software data
- Real-time data and software backup
- All data is encrypted to protect personal data, and meets the strictest international data protection regulations including the GDPR and PCI data security standards

Software – ParcelA Edge Touchless

ParcelA Lockers' User-Friendly Access

- Compatible with iOS and Android devices
- Always-on technology features long-lasting, self-charging batteries
- Wi-Fi internet enabled
- Continues to operate even if internet connectivity fails
- Recipient is notified at time of drop off through text or email
- To retrieve a package, addressee simply visits the locker and unlocks their box with their hand-held phone

Open API Fully Integrates Software

- ParcelA Edge systems incorporate a Cloud- and microservice-based software architecture to fully and easily integrate with data management systems such as Warehouse Management Systems (WMSs) and Enterprise Resource Planning (ERP) software. Our open Application Programming Interface (API) gives users instant access to all features of our lockers, while also allowing for the control and tracking of the systems' electronic sensors and parts.

Our software enables users to:

- Control lockers remotely in case of problems
- Manage data and track package chain-of-custody and locker usage
- Integrate with other data management systems to streamline business functions
- Notify users and administrators of package pickups and deliveries
- Alert administrators of potential concerns, including tampering and safety

ParcelA Edge Fully Integrable Software

- Our microservice-based software architecture has been engineered by ParcelA's developers to serve as a one-stop portal for both B2B (Business to Business) and B2C (Business to Customer) environments. Our Cloud-based system makes our features instantly accessible.
- Learn how you can integrate our last-mile – and last-100' feet – solutions into your supply chain management.

Modularity, Scalability, and Security

Our package management solution is fully modular and scalable. Different sized locker boxes can be installed in columns, and as many columns as needed placed on location. Our software tracks usage, which allows your system to grow with your customer base. Packages are kept securely until picked up, and users are kept safe through use of our integrable cameras and when locker columns are placed in convenient, high-traffic areas.

Data Security

ParcelA Edge's entire system was designed to meet the strictest international data protection laws. Data is fully encrypted and backed up, while also kept up-to-date and recoverable. Our security protocols minimize the processing of financial and personal information, and limit access to user data to times that it is needed.

Virtual Private Cloud

ParcelA Edge's software tracks and logs access to controls, analytics, and data, and allows you to view them in your own private network to ensure security is maintained.



User Agnostic Package Management Solution

ParcelA Edge lockers are user-agnostic, which means that owners and admins can determine who can access lockers and boxes. This allows ParcelA lockers to be used as a package management system for the general public, for a small group of people, or for individuals.

Real-Time Dashboards

Track in real time the Key Performance Indicators (KPIs) essential for your business to help streamline your operations.

Reporting and Analytics

ParcelA Edge's Cloud-based architecture enables real-time logistics reporting, with near-instant access to updates, records, and logs. Track locker usage over time including time-in-locker, time-to-delivery, and under-used lockers. Planning for growth is made possible through our robust analytics and 24/7 customer support.



User-Friendly Notifications through Text, Email, or Push Notification

Opening, closing, and locking doors, as well as deliveries and pick-ups, all trigger events. For each event, users and admins can be notified through their choice of text, email, or push notification.

Real-Time Diagnostics

ParcelA Edge lockers have a suite of diagnostic sensors that continually update the system. This enables our 24/7 customer service department to help you troubleshoot issues, and provide technical assistance as needed.

Robust Reporting and Data Exporting

Key Performance Indicators (KPIs) can be tracked and managed through our Service-Level Agreement (SLA) management tool. Data can be captured in bulk and exported to the Business Intelligence (BI) tool of your choice.

Fully Encrypted Database

ParcelA Edge meets the strictest international standards for data security and encryption, and partners only with Cloud computing services that also meet those rigorous standards.

Data Recovery in Case of Disaster

To prevent data loss in the case of a power or systems failure, all data is regularly backed up to our Cloud computing service. Our 24/7 customer support can get you back up and running as quickly as possible, with no loss of data or business.





1000000000
Robot Network
Layer
Management
Structure
Structure
Structure

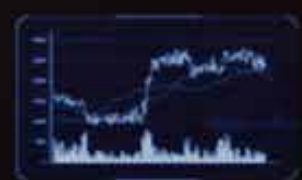
- 1000000000
- 1000000000
- 1000000000
- 1000000000
- 1000000000
- 1000000000



- 1000000000
- 1000000000
- 1000000000
- 1000000000
- 1000000000
- 1000000000



- 1000000000
- 1000000000
- 1000000000
- 1000000000
- 1000000000
- 1000000000





 PARCELA®





ParcelA Smart Self-Storage Locker

ParcelA S-SLTM

ParcelA S-SL (**Smart, Self-Storage, Locker**), all-in-one package management solution, gives commuters, travelers, live entertainment fans, shoppers, students, and anyone else a secure place to store their items while they enjoy their time.

User-agnostic ParcelA S-SL provides secure, fully integrated systems to simplify kiosk-managed storage for products and/or belongings. Designed with the end-user in mind, smart self-storage lockers create a new, tech-savvy business model for owners and managers of:

- Airports, subway and train stations
- Sports arenas and stadiums
- Concert halls and theaters
- Justice halls, community buildings, and schools and universities

If you own or operate a public or semi-public space, now is the time to invest in the next generation of smart parcel lockers from ParcelA S-SL. Turn your property's underused spaces into an income-generating 'self-storage' service by installing user-agnostic parcel lockers for rent.

Users can rent locker boxes by the hour, day, or week! Multinational third-party logistics providers and retail centers are already investing in these technologies, to provide their users with their key benefits. **Now's the time to get ahead of that curve, and invest in profit generating, user-agnostic ParcelA S-SL self-storage lockers.**

Technical Details

- Durable steel construction is both corrosion and tamper resistant
- Compatible with touch screens and comfortable use with fingers
- Ability to work in different screen resolution
- Enable to choose the compartment suitable for the package size
- Audible warning and guidance with buzzer when the cover is opened
- LED lighting for inside and outside the compartment
- RGB LEDs for notification separately on each compartment

Leave Your Package

1

The user will choose "Leave Your Package" from the touch screen of the smart self-storage lockers.

2

The user introduces her/himself to the smart self-storage lockers by choosing one of the authentication methods.

3

Compartment Selection Screen appears and the user selects a compartment suitable for the dimensions of his/her products or belongings.

4

The compartment will be closed and the process will be completed.

Pick up your Package

1

The user will choose "Pick up Your Package" from the touch screen of the smart self-storage lockers.

2

The user introduces her/himself to the smart self-storage lockers by choosing one of the authentication methods that she/he has determined.

3

The compartment opens, the user picks up the package and the compartment closes.

Authentication Methods

NFC / NFC (RFID) Card: ID Authentication and verification is done through NFC Cards that are given by in areas such as offices, companies, swimming pools, business centers.

SMS: Authentication is done with the password sent to the user's mobile phone via SMS.

Barcode Reader: A barcode is given to the user at the time of package delivery via the barcode printer on the smart self-storage locker. When the user wants to pick-up the package, authentication is done by scanning the barcode.

Fingerprint Reader: The user introduces his/her finger to the system before leaving the package. At the pick-up stage, he/she makes the identify verification by scanning the finger again.

Certificate



INSPECTION REPORT
SCIENCE TEKNİK BİLİMLERİNE A.Ş.



Report No: 2022011370
Application: CANOWATE Smart Locking - Pasifik
Contact Person: Yasin SANC
Contact Telephone: +90 312 884 23 23
Contact e-mail: yasin.san@science.com.tr
Report Date: 28.11.2022
Total number of pages: 6

Sample ID: Sample Name: Pasifik Smart Fingerprint Locker
Sample Code: PASIFIK 001 and 130009

TEST	METHOD	RESULT
Fingerprint detection, withdrawal, curtain wailing, grilles and shutters → Saferlik resistance → Requirements and classification	EN 1627	PASS (with asterisk)





 Chief Representative
 Name: M. OK


 Technical Manager
 Name: M. OK



UYGUNLUK ONAYI
ATTESTATION OF COMPLIANCE



Reference No: TRM-21-205467
Reference No.: CANOWATE SENS TEKNOLOJİ ELEKTRONİK SAN. VE TİC. A.Ş.
Applicant: Ekiyoğlu Mah. Akşey Cad. No: 12, Çekirgeköy / İstanbul / TÜRKİYE
Product: CANOWATE SENS TEKNOLOJİ ELEKTRONİK SAN. VE TİC. A.Ş.
Manufacturer: Ekiyoğlu Mah. Akşey Cad. No: 12, Çekirgeköy / İstanbul / TÜRKİYE
Product: Pasifik Akıllı Kargo Oluşturma ve Erişim Kontrol Pasifik Smart Locker and Safebox
Type/Model: S 4 250 Chambers
Reference Directives: Machinery Safety Directive (2006/42/EC)
Reference Standards: EN 603 12100-2010, EN 60304-1:2006AC:2016

Reference Standard: EN 603 12100-2010, EN 60304-1:2006AC:2016
Issue Date: 08.11.2021
Expiry Date: 07.11.2022





 Chief Representative
 Name: M. OK


 Technical Manager
 Name: M. OK



ELEKTRİK GÜVENLİK TEST RAPORU
ELECTRICAL SAFETY TEST REPORT



İstekçi / Applicant: Ekiyoğlu Mah. Akşey Cad. No: 12, Çekirgeköy / İstanbul / Türkiye
Ürün / Product: Pasifik Akıllı Kargo Oluşturma ve Erişim Kontrol Pasifik Smart Locker and Safebox
Yapılan Testler / Tests Performed: EN 60304-1 (2016) Makine Güvenliği (Machinery Safety)

Test Sonuçları / Test Results: Makine Güvenliği - Elektrik güvenliği - Elektrik ekipmanları için testler - Part 1 - Genel Kuralları
Test Tarihi / Date of Test: 28.11.2021
Test Yeri / Location of Test: Ekiyoğlu Mah. Akşey Cad. No: 12, Çekirgeköy / İstanbul / Türkiye
Yapılan Testin İçeriği / Content of Test: CANOWATE SENS TEKNOLOJİ ELEKTRONİK SAN. VE TİC. A.Ş.
Yapılan Testin İçeriği / Content of Test: Makine Güvenliği - Elektrik güvenliği - Elektrik ekipmanları için testler - Part 1 - Genel Kuralları
Yapılan Testin İçeriği / Content of Test: EN 60304-1 (2016) Makine Güvenliği (Machinery Safety)

Yapılan Testin İçeriği / Content of Test: Makine Güvenliği - Elektrik güvenliği - Elektrik ekipmanları için testler - Part 1 - Genel Kuralları
Yapılan Testin İçeriği / Content of Test: EN 60304-1 (2016) Makine Güvenliği (Machinery Safety)

Yapılan Testin İçeriği / Content of Test: Makine Güvenliği - Elektrik güvenliği - Elektrik ekipmanları için testler - Part 1 - Genel Kuralları
Yapılan Testin İçeriği / Content of Test: EN 60304-1 (2016) Makine Güvenliği (Machinery Safety)





www.parcelaglobal.com

